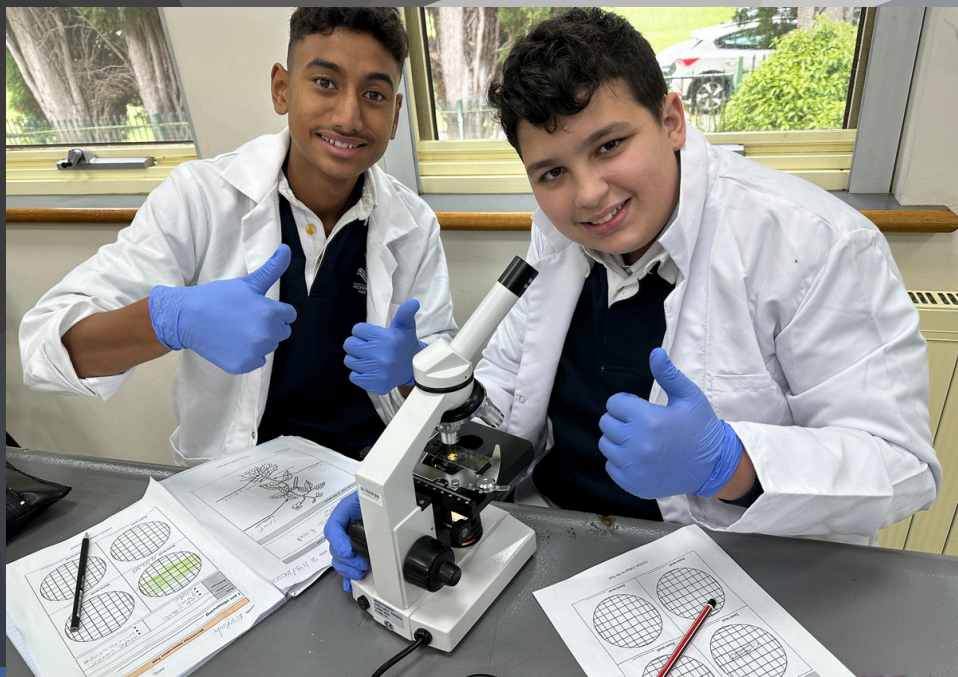


**PROUDLY PROVIDING EXCELLENCE IN DEAF
EDUCATION FOR STUDENTS IN FOUNDATION
THROUGH TO YEAR 12.**

SECONDARY



VICTORIAN COLLEGE FOR THE DEAF

VICTORIAN COLLEGE FOR THE DEAF
597 ST KILDA ROAD, MELBOURNE 3004
(03) 9510 1706 VICTORIAN.DS@EDUCATION.VIC.GOV.AU

WWW.VCD.VIC.EDU.AU



“Graduates of Victorian College for the Deaf are literate, critical thinkers who leave our college as autonomous young adults with viable pathways. We value deafness from a cultural perspective and invest in the learning of English and Auslan. How we teach, what we teach and having Deaf and hearing staff across the college teach deaf and hard of hearing students makes our college unique.”

- College Vision

PRINCIPAL'S WELCOME

Hello and welcome to Victorian College for the Deaf.

You have certainly picked an exciting time to engage with Victorian College for the Deaf. Our college has been identified as a system leader because of our high achievements for students over the past four years.



We are extremely proud of the literacy and numeracy pathways we offer students. At VCD we understand the importance of communication and being able to use Auslan and English (written and spoken) to communicate. We value both languages and use both in our instructional practice throughout the college. Of course, our other subjects are tailored to meet the variety of learners we have at VCD.

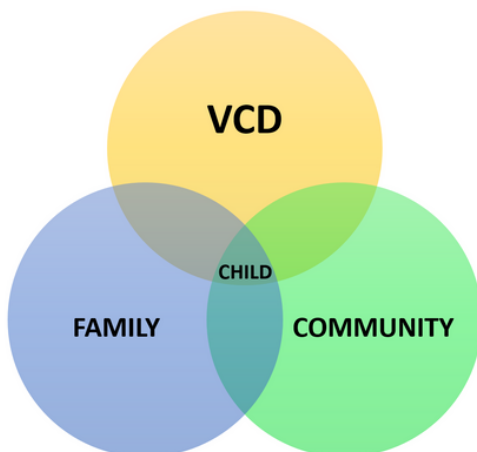
Our school is family oriented. Parent information evenings on topics important to raising a deaf child are regularly on offer. Our teaching and wellbeing team are available to help every family, and every child, succeed.

Starting secondary school is full of new experiences. We are ready to welcome you and support you and your child through this journey. Dream big. Visit us. Ask lots of questions. We hope you like what you see and decide to join our VCD family.

Sincerely,
Marg Tope
Principal

WHY CHOOSE VCD?

- Full time instruction from teachers of deaf children who are leading specialists in their field
- Tailored curriculum to meet the learning needs of students in English and/or Auslan
- Small class sizes to enrich learning and educational experiences
- Regular assessment and data tracking to support individualised student learning growth
- Focus on creating meaningful tertiary and career pathways post secondary school
- Strong focus on developing identity, wellbeing and personal strengths
- Auslan for Families program for family members to support family communication
- Access to allied health professionals including a Social Worker, Speech Pathologists and visiting Audiologists
- Access to wellbeing team with specialised knowledge in raising deaf children, family engagement and the NDIS
- Opportunity for friendships with 'like' peers and deaf role models
- Inclusive communication and belonging across the college



Victorian College for the Deaf is child centred. We recognise the importance of the school, family and community as central to a child becoming literate and having a great education.



Our stunning campus is located within moments of Melbourne CBD.

Often, schools designed for hearing students have limited or no specialised Teacher of the Deaf support. Classrooms are designed for hearing students, and classes are larger and louder. It is easy to get lost and forgotten in a classroom like this. The pace of delivery in mainstream settings with the amount of new language and new concepts, make it difficult for deaf students to keep up. As a result, students may start to fall behind and gaps in their learning may occur. This can have an ongoing negative impact on their educational outcomes and wellbeing.

At Victorian College for the Deaf, no student is left behind. Our tailored program ensures every student is supported and challenged with achieving their learning outcomes. Our teachers are expert educators who set high standards for our students and support them to meet their full potential.

LEARNING



Our priority at VCD is for our students to be numerate and literate critical thinkers. We offer a supported environment where students are encouraged to reach their full potential, and develop meaningful tertiary and employment pathways.

We have developed a strong literacy and numeracy curriculum that is delivered through the Explicit Direct Instruction (EDI) model. This model has produced outstanding results since its implementation. Our languages of instruction in the classroom are Auslan and spoken/written English. Literacy programs are supported by our in-house Speech Pathologists.

In addition to 15 hours of literacy and numeracy tuition per week, students engage in a variety of other subjects. Specialist teachers deliver programs in Art, Science, Auslan, Health, Sport, Careers and Respectful Relationships.

Our small class sizes enable an intimate learning environment that can be adjusted along the way to meet changing learning needs. Students are supported by our expert teaching team and education support staff.



Year 7 Curriculum		
Subject	Time allocation per week	Hours per week
Literacy (English)	10 sessions	8.5 hrs
Numeracy (Maths)	8 sessions	6.75 hrs
Sport and Physical Education	4 sessions	3.25 hrs
Art	2 sessions	1.75 hrs
Science	2 sessions	1.75 hrs
Information Communication Technology (ICT)	1 session	0.75 hrs
Auslan	1 session	0.75 hrs
Respectful Relationships	1 session	0.75 hrs
Health	1 session (Semester 1)	0.75 hrs
Careers	1 session (Semester 2)	0.75 hrs

SECONDARY SCHOOL PATHWAYS

VCE | VET | VPS | SBAT

The college offers an array of senior study options, including VCE Vocational Major, Victorian Pathways Certificate, VET certificates, a modified VPC program, school based apprenticeships (SBATs), and tailored programs to support transitions into work and further study. In addition to a range of studies, VCD offer an individualised approach to pathways planning.

Our three onsite businesses, *Tradeblock Cafe*, *Ablock Bike Shop* and *Urban Block Garden*, provide a unique opportunity for students to build workplace skills in a supported environment. Learn more about our onsite enterprises on the following page.

VCD INITIATIVES

TRADEBLOCK CAFE



Tradeblock Cafe is an authentic work environment and Deaf space open to the public. Tradeblock offers a hands on program where VCD students experience a range of roles and responsibilities including barista, kitchen hand, dish hand, customer service and cleaning. Tradeblock is open Tuesday to Friday, 8:30am - 2:30pm during the school term - come in for a coffee and some lunch!

ABLOCK BIKE SHOP



Ablock trains secondary VCD students in bicycle mechanics and provides them with work experience in a supported environment.

URBAN BLOCK GARDEN



Our most recent endeavour, Urban Block Garden Enterprise, aims to equip students with skills in sustainable horticulture practices and food production. Urban Block supplies Tradeblock Cafe with fresh produce, operates a weekly market stall open to the public, and promotes sustainability in the school through composting.

OUR CAMPUS

Situated within moments of the CBD, the Victorian College for the Deaf is centrally located in the heart of Melbourne's inner city. With ample green space on campus and Fawkner Park, MSAC and Albert Park Lake all within walking distance, our students are spoilt for choice.

All teaching and learning spaces are equipped with state of the art smart screen technology, and students have access to ipads, laptops and desktops during class time.

Our campus is bursting with life all year round thanks to our productive garden. Students grow a range of seasonal fruits, herbs and vegetables. Other specialised learning spaces across the school include an art studio, bike education space, hospitality kitchen and science lab.



STUDENT SUPPORT

AUDIOLOGY

VCD engages an Audiologist from Hearing Australia to provide routine testing and maintenance of equipment for our students. This enables students to maintain their hearing health with minimal disruption to learning time.

SPEECH THERAPY

The college employs qualified Speech Pathologists. The speech pathology role at VCD is to work in classrooms alongside teachers enriching the teaching and learning of students.

WELLBEING

Our teachers and wellbeing professionals work with students to ensure that they feel safe, engaged and empowered to learn at school. We provide individualised support for students and where needed we organise referrals for specialised services. We also work with parents to enrich parenting skills, with a focus on strengthening the child's emotional wellbeing.

NDIS

The NDIS system can be overwhelming to navigate. Our wellbeing team are committed to ensuring students have access to the necessary supports, in order for them to thrive both in and out of the schooling environment. The wellbeing team can support families to navigate the NDIS process, and can provide information about applying for the NDIS, creating a plan, and reviewing the plan and goals.

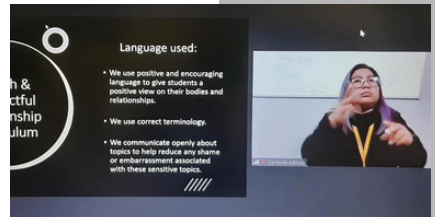
PATHWAYS

Our dedicated Pathways Coordinator works with students as they move through secondary school to develop long term goals and support the transition into tertiary pathways.

COMMUNITY

PARENTS AS PARTNERS

At VCD we engage with our parents as partners to provide wrap around support for our students. Through active engagement with families we explore important parenting matters. Together we develop strategies to improve student's wellbeing and learning.



PARENT EVENTS

We host parent information evenings each term. Parents can opt for face-to-face participation or participate via Zoom. This enables parents the opportunity to learn and share together in the comfort of their own homes. Our events are informed by our parents, so topics are relevant and meaningful. Examples include: *Teaching and Learning at VCD*, *Your Access to NDIS Support and Services*, *Cyber-Safety* and *Your Child's Emotional Growth and Wellbeing*.



AUSLAN FOR FAMILIES

VCD's Auslan for Families is an engaging, enjoyable and a relaxed learning program that has been developed with parents. It doesn't matter if you have little or no previous knowledge of Auslan (Australian Sign Language) because you will learn basic conversational skills and vocabulary frequently used by families.



CAMPS AND EXCURSIONS

Our camping and excursion program is an extension of our teaching and learning program. Camps and excursions support our school curriculum by taking knowledge built in the classroom, and applying it to high engagement off-campus environments. In a supported setting, students are encouraged to build interpersonal skills and develop their independence, team work and social skills.

At VCD, our camps are underpinned by three areas of the Victorian Curriculum - Personal and Social Capability, Respectful Relationships and PE & Health - with a specific focus on:

- Emotional literacy
- Personal strengths
- Positive coping
- Resilience



TRANSPORTATION

The Department of Education funds transport options for students to access VCD. If your child meets the department's criteria there are several options available.

Group taxi travel

- The Department of Education funds taxis (maxi cabs), each staffed by a driver and supervisor. The same staff remain assigned to the taxis for the duration of the year.
- The taxis will pick up and drop off students at a neutral public location (e.g. bus stop).
- To be eligible, students must live a minimum of 4.8 km from the college, but within reasonable travelling parameters (the taxi service cannot begin prior to 7:00 am).
- The college will support parents/carers in making applications to the Department of Education for transport assistance.
- If a student moves home address and requires a new pick up location, the application process must begin again.

Private car travel

- If a parent wishes to drive their child to school themselves, they could be eligible for a sum of money to put towards petrol expenses. To be eligible, students must live at least 4.8 km from the college. Applications are made to the Student Transport Unit.

Public transport travel

- If you wish for your child to come to school on public transport, they may be eligible for free myki travel. To be eligible, VCD students must live at least 4.8 km from school, and not be accessing the taxi service.
- Secondary students are encouraged to move into public transport travel as they progress through high school. It is a great way for students to build resilience, independence and life skills.



STUDENT PROFILE

Rafael completed Year 12 at Victorian College for the Deaf in 2019. During his time at the college, he developed a range of skills that prepared him for tertiary education and his chosen career pathway.

Through VCD, Rafael completed a dual VET Certificate II in Hospitality and Kitchen Operations, gaining skills in food preparation, cooking and working in a commercial kitchen.

As part of his VCAL studies, Rafael engaged in weekly work placement at the college's Tradeblock cafe. Working at the cafe enabled Rafael to use the skills and knowledge gained through the VET Certificate in a dynamic and supportive work environment.

Following his graduation from Victorian College for the Deaf, Rafael began his tertiary studies at Kangan TAFE and secured a coveted bakery apprenticeship.

VCD provided great opportunities that led me on this path. My goals for the future are to travel overseas, and one day own my own business.



THE NEXT STEPS...

CAMPUS TOURS

We welcome all families to visit our college campus. Contact the VCD office by phone (03 9510 1706) or email (victorian.ds@education.vic.gov.au) to book in for a campus tour with our college Principal.

ENROLMENT

Enrolments are accepted from Foundation through to Year 12 across the year. Victorian College for the Deaf is not zoned, meaning our students attend from all across Melbourne. Contact the VCD office by phone (03 9510 1706) or email (victorian.ds@education.vic.gov.au) to discuss enrolment.

MATERIALS AND UNIFORM

Enrolled students are expected to wear a VCD school uniform and bring materials listed on the yearly booklist.

The college has support available for families experiencing severe financial hardship. Please contact the VCD office if you require assistance.

“To watch [the staff] engage, communicate and lead the children is simply inspiring. They are an amazing bunch of people. They are amazing teachers that are proficient education professionals and that should not be lost in the emotion of my observations, but it is the care and ultimately the respect that they have for the children that blows me away.”

- VCD parent testimonial

VICTORIAN COLLEGE FOR THE DEAF

VICTORIAN COLLEGE FOR THE DEAF
597 ST KILDA ROAD, MELBOURNE 3004
(03) 9510 1706 VICTORIAN.DS@EDUCATION.VIC.GOV.AU

WWW.VCD.VIC.EDU.AU

